



**USB-STUURPEN  
GEBRUIKS- EN SERVICEVOORSCHRIFTEN**

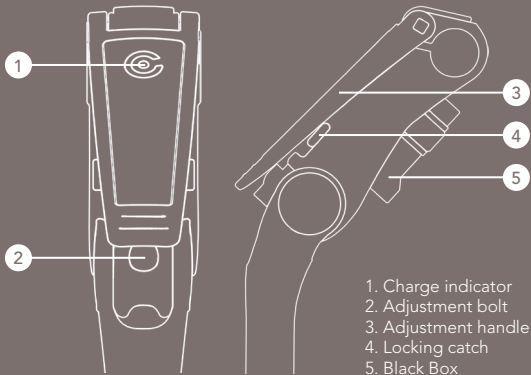
**USB-VORBAU  
ANWENDUNGS- UND UNTERHALTSVORSCHRIFTEN**

**USB STEM  
DIRECTIONS FOR USE AND SERVICE MANUAL**



**COGTINA**

Congratulations on your purchase of the Cortina USB stem. Some usage and service instructions are given below to ensure that you will enjoy the stem for a long time to come.

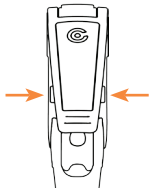


# 1. USE OF THE STEM

---

## 1.1 Unlocking

Pull the two indicated catches back and at the same time pull the handle upwards. The stem is now unlocked.



## 1.2 Height adjustment

Loosen the bolt in the stem with Allen key 6 and adjust the stem to the desired height. Now retighten the bolt.



**Take care not to raise the stem higher than the maximum indicated on the steerer tube, see chapter 3.**

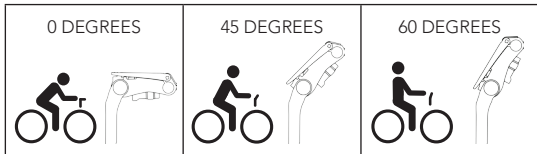
NL

DE

EN

### 1.3 Adjustment

Once the stem has been unlocked the desired angle can be set. The stem can be adjusted between -10 and 60 degrees. Depending on your cycling position, adjust the stem 0 degrees for the sports cyclist, 45 degrees for the average cyclist and 60 degrees for the city cyclist, for example. After making the adjustment with the tightening bolt, retighten under the lock handle using Allen key 6.



### 1.4 Lights

If the stem is attached to the dynamo, the internal power bank will be charged and the charging indicator will light up.



**NB: contact your dealer if the stem is connected but the logo does not light up when cycling.**

## 2. USE OF THE BLACK BOX

---

The electronic components of the stem are in the Black Box, fitted at the bottom of the stem.

### 2.1 Micro-USB connector

The Black Box is charged via the micro-USB connector. This can be done in two ways:

- Connection to the hub dynamo. With this method the Black Box is charged whilst cycling.
- Connection with a micro-USB adapter when stationary. The micro-USB adapter charges the Black Box so that it is fully charged during the next trip.



***NB: never connect the telephone directly to the micro-USB that comes out of the stem. The Black Box must always be in between.***

### 2.2 USB port

The output is located on the side of the Black Box. Devices can be connected to this, provided that they correspond to the output of the Black Box (see chapter 4.2 for the output specifications).

### 2.3 Rubber plug

There is a rubber band around the Black Box, which has a recess with a plug at the level of the USB output. If no cable is connected to the USB output the plug should be inserted to prevent water from getting in.

### 2.4 Fitting the Black Box

Open the handle to reveal the screw holes. Place the Black Box in the gap under the stem. Hold the Black Box in place and attach it by tightening up the screws through the stem in the Black Box.

## 3. WARNINGS

---

- Do not adjust the stem higher than indicated.



- Do not set the angle of the stem higher than the reach of the cable. The cable could break if it is too tight against the stem.
- Do not unfasten the Black Box unnecessarily. Make sure that the rubber plug is inserted when there is no cable in the output.
- Check that the handle is properly closed and locked before setting off.
- Do not force the tightening bolt.
- Make sure that the handlebars do not move any further after the tightening the bolt.
- Make sure that the stem is tightened properly after adjusting its height.
- Never connect the telephone directly to the micro-USB that comes out of the stem. The Black Box must always be in between.

## 4. SPECIFICATIONS

---

### 4.1 Measurements

The Cortina USB stem is suitable for bent handlebars and stems of  $\varnothing$  25.4 mm. The Cortina USB stem is not suitable for an ahead preconstruction.

#### 4.2 Black Box Output

- 5V
- 1600 mAh
- 0.5A
- 2.5W

#### 4.3 Black Box Input (from the hub dynamo)

- Micro USB
- 6V AC
- 500 mAh
- 3W

## 5. GENERAL CONDITIONS

---

It is possible that your new bicycle is already equipped with the USB stem, but it can also be bought separately. For more information we refer you to our general safety and guarantee conditions. These are available at [www.cortinabikes.com/manuals](http://www.cortinabikes.com/manuals).

## 6. CERTIFICATION

---

- Watertight in conformity with IPX 3 & NEN EN ISO 4210.



## GARANTIEKAART USB-STUURPEN / GARANTIEKARTE USB-VORBAU / GUARANTEE CARD USB STEM

Naam / Name / Name

Adres/Woonplaats / Adresse/Wohnort / Address/Place of residence

Aankoopdatum / Kaufdatum / Purchase date

Klacht / Beschwerde / Complaint

Naam dealer / Name des Vertragshändlers / Dealer name

Wordt alleen in behandeling genomen met origineel aankoopbewijs. / Nur Anfragen mit Original-Kaufbeleg werden in Bearbeitung genommen. / Will only be processed if accompanied by the original receipt of purchase.

Licentiehouders van dit product: / Lizenzinhaber dieses Produktes: / Licensee for this product:  
Kruitbosch, Ravensburgstraat 8, NL-8028 PZ Zwolle

 [FACEBOOK.COM/CORTINAFIETSEN](https://www.facebook.com/cortinafietsen)

 [INSTAGRAM.COM/CORTINABIKES](https://www.instagram.com/cortinabikes)

 [YOUTUBE.COM/CORTINAFIETSEN](https://www.youtube.com/cortinafietsen)

 **CORTINA**

[CORTINABIKES.COM](https://www.cortinabikes.com)